

Environmental Data Management Best Practices

What is ITRC?

ITRC is a state-led coalition dedicated to reducing barriers to the use of innovative environmental technologies. ITRC represents over 1,200 individuals, across 50 states, working to produce guidance and training on innovative environmental solutions. Bringing together teams of state, federal, tribal, industry, academic, and stakeholder experts, ITRC broadens and deepens technical knowledge and reduces barriers to expedient regulatory approval. Since 1995, the collective success of this coalition has generated huge benefits to the environment, inspired new technical innovations, and saved hundreds of millions of dollars.

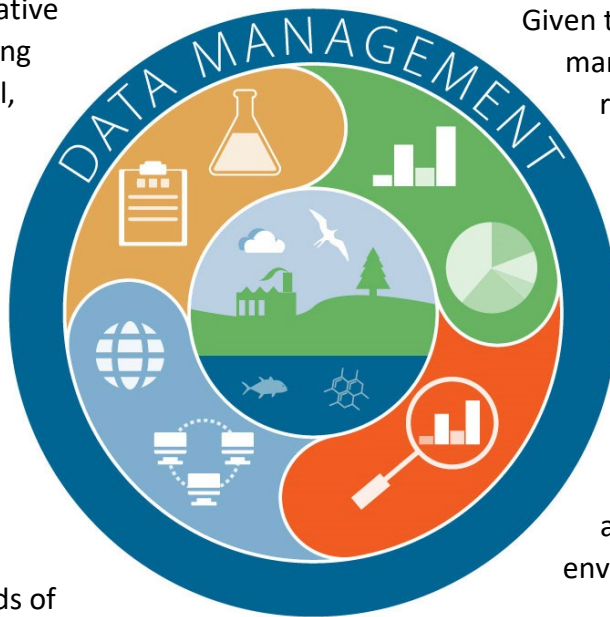
ITRC is a program of the Environmental Research Institute of the States, managed by the Environmental Council of the States. This partnership is based on a commitment to protect and improve human health and the environment across the country.

Environmental Data Management Best Practices Team

Effective data management serves as the foundation for accurate data analyses, data visualizations, and sound decision-making.

Given the crucial role data management plays throughout the regulatory and scientific communities and beyond, this multidisciplinary ITRC team will search for broad consensus on the current patchwork of guidelines for data management. The team will develop Environmental Data Management Best Practices that can be applied across a wide spectrum of environmental data.

This Team's chief objective is to be a platform for the integration and cohesion of data management policies across environmental disciplines and programs through online implementation trainings and community forums. This ITRC Team will produce a toolkit that focuses on the fundamentals of environmental data management practices, so that organizations can progress toward more modernized and efficient data management.



The Need for Data Management Best Practices

There is currently a lack of standardized and consistent data management practices necessary to ensure rapid access to high quality data, and to minimize the risks involved in making costly business and regulatory decisions. Industry stakeholders, consultants and government regulators are pushing for real-time decision making based on accurate data sets. These decisions require complete, organized, and high-quality data, and project managers need updated guidance to utilize new database technology and techniques. The Environmental Data Management Best Practices Team will work to develop proactive and flexible data practices that are universally applicable for environmental data collection activities.

JOIN THE TEAM!

The Environmental Data Management Best Practices Team will commence work in January 2021. By joining this team, you will help draft the data management plan, develop training, craft a data management tool selection matrix, increase data interoperability, and promote cohesion across environmental disciplines and programs.

Team Registration:

<http://itrcweb.org/Membership/TeamRegistration>



ITRC
1250 H St. NW, Suite 850
Washington, DC 20005
itrcweb.org

